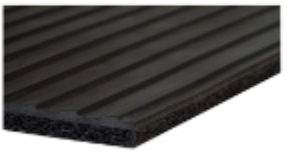




ANTI FATIGUE MATTING



Colour

Black

Ribbed

Wide

Physical Characteristics

Tensile: 435 PSI

Elongation: 300%

Hardness: 70 SHORE "A" +/- 5

Temperature Range: -20°C to 80°C (-4°F to 170°F)

Notes

1/8" Rubber Face x 1/8" or 1/4" sponge back. Anti fatigue matting is available in other colours, widths and other backing specifications upon request.

CALL FOR PRICING
