

583T Pipelayer

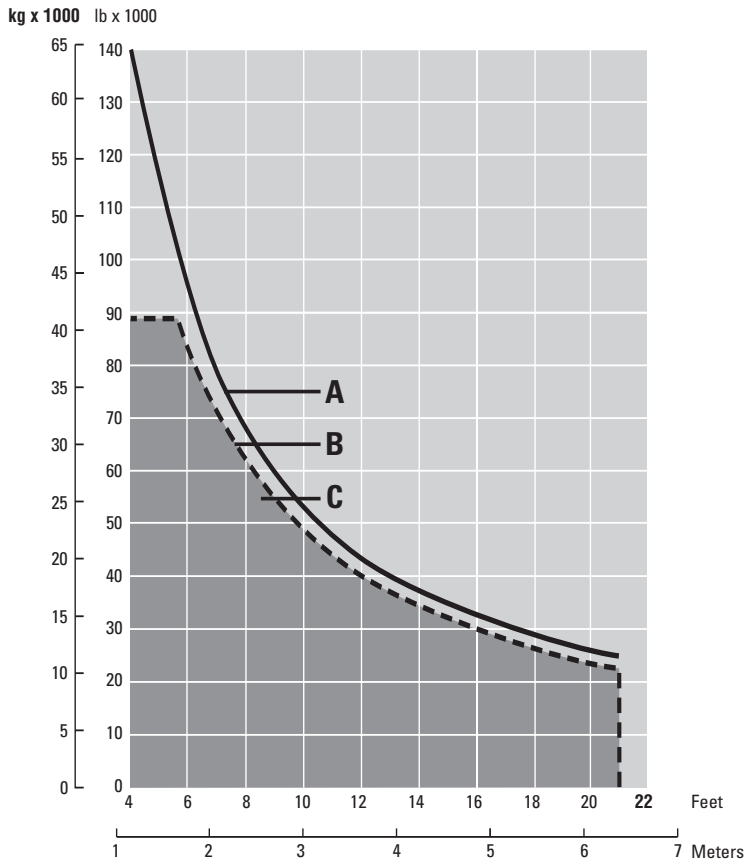
Pipelaying Equipment

Hydraulic Power – 540 L/min at 18 259 kPa/183 bar (143 gpm at 2,650 psi) and 2,100 rpm pump speed independent of torque converter.

Planetary Hydraulic Winches

	Hook		Boom	
Drum diameter	317 mm	12.5 in	317 mm	12.5 in
Flange diameter	610 mm	24 in	610 mm	24 in
Drum length	338 mm	13.3 in	338 mm	13.3 in
Capacity – 19 mm (3/4" diameter)	181 m	595 ft	181 m	595 ft
Wire rope installed – 19 mm (3/4" diameter)	102 m	336 ft	102 m	336 ft
Hook speed (raise) with 6 part line	22 m/min	72.1 ft/min		
Boom – square section standard	7.32 m	24 ft		
Removable counterweight 13 segments, 2 @	300 kg	662 lb		
6 @	535 kg	1,180 lb		
5 @	430 kg	948 lb		
Total weight extendible	9036 kg	19,920 lb		

Lifting Capacity



Specified Equipment:

19 mm (3/4") diameter wire rope
26 672 kg (58,800 lb) minimum breaking strength

6 part load line
5 part boom line

9036 kg (19,920 lb) counterweight extended
boom 7.3 m (24 ft) standard
Total operating weight 45 359 kg (100,000 lb)

A Lift capacity at tipping point*

B Rated load capacity*

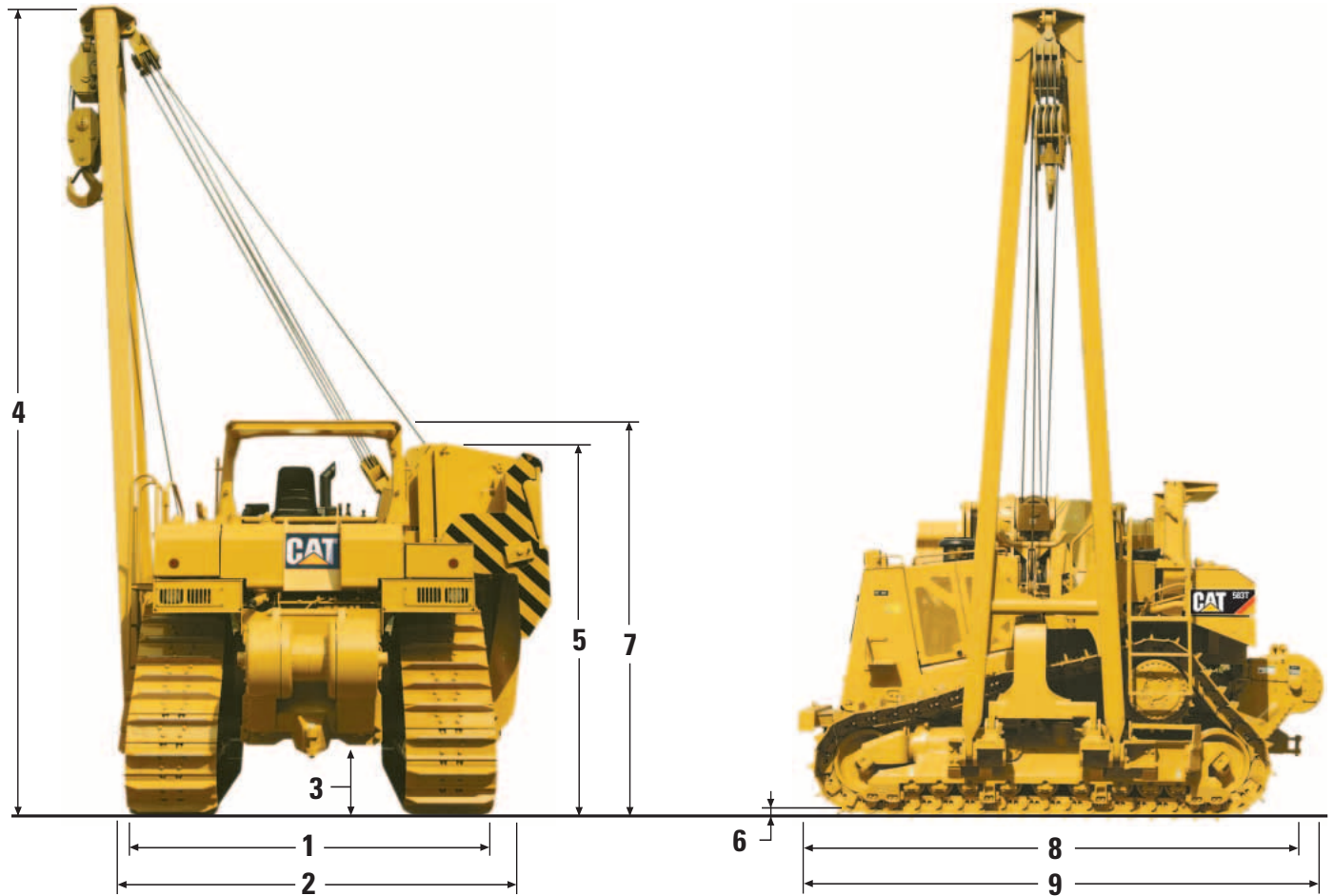
C Working range*

* Per ISO 8813:1992

583T Pipelayer

Dimensions

(approximate)



1 Width to outside of track	3047 mm (10'0")
2 Minimum shipping width (counterweight frame, counterweight mounting brackets, boom and boom mounting brackets removed)	3070 mm (10'1")
Shipping width (boom and counterweight removed)	3598 mm (11'10")
3 SAE ground clearance (face of shoe)	497 mm (19.6")
4 Boom height – vertical	
7.3 m (24') boom	8102 mm (26'7")
8.5 m (28') boom	9308 mm (30'6")
5 Height (ROPS and boom removed)	3520 mm (11'6")
6 Grouser height	78 mm (3.1")
7 Height to top of optional ROPS (boom removed)	3728 mm (12'3")
8 Operating length (with rear drawbar)	5231 mm (17'2")
9 Operating length (with optional winch)	5385 mm (17'8")