



PRODUCT CATALOG

TABLE OF CONTENTS

Our Company	1
Benders	4
Lined Bending Sets	20
Mandrels	26
Clamps	32
Roller Cradles	36
Vacuum Lifters	40
Facing Machines & Power Units	44
Side Booms & Air Compressors	45
Accessories	46

DMI INTERNATIONAL, LLC. ("DMI International") is a world-class company dedicated to manufacturing, marketing, and supplying both construction and maintenance equipment to the pipeline industry.

The equipment we offer is designed, engineered and manufactured in our very own state-of-the-art facility. We employ a full staff of Engineers, Technicians, Service Personnel and Sales Specialists. When you buy or lease from DMI International, you are assured of competent, around-the-clock service and support.

We have earned a reputation in the industry for quality and reliability. Whether you need equipment in order to maintain or service a refinery or build a large diameter cross-country pipeline, DMI International is here to supply the equipment you need, fusing it with world class service.

DMI International also employs a full-time staff of Sales Technicians who travel the world helping our many customers. DMI International maintains our corporate headquarters in Tulsa, Oklahoma and has field offices located in Center, Texas; Conroe, Texas; Alice, Texas; Midland, Texas; and Mill Hall, Pennsylvania. We also have facilities in the Middle East, South America and Canada.

Contact us if we can help you with your pipeline needs.

Any questions, inquiries and comments may be directed to:

DMI International, LLC.
15615 East Pine Street
Tulsa, Oklahoma, USA 74116
Phone: 918-438-2213
Fax: 918-438-2061
www.dmiinternational.com
sales@dmiinternational.com



SALES • SERVICE • RENTAL

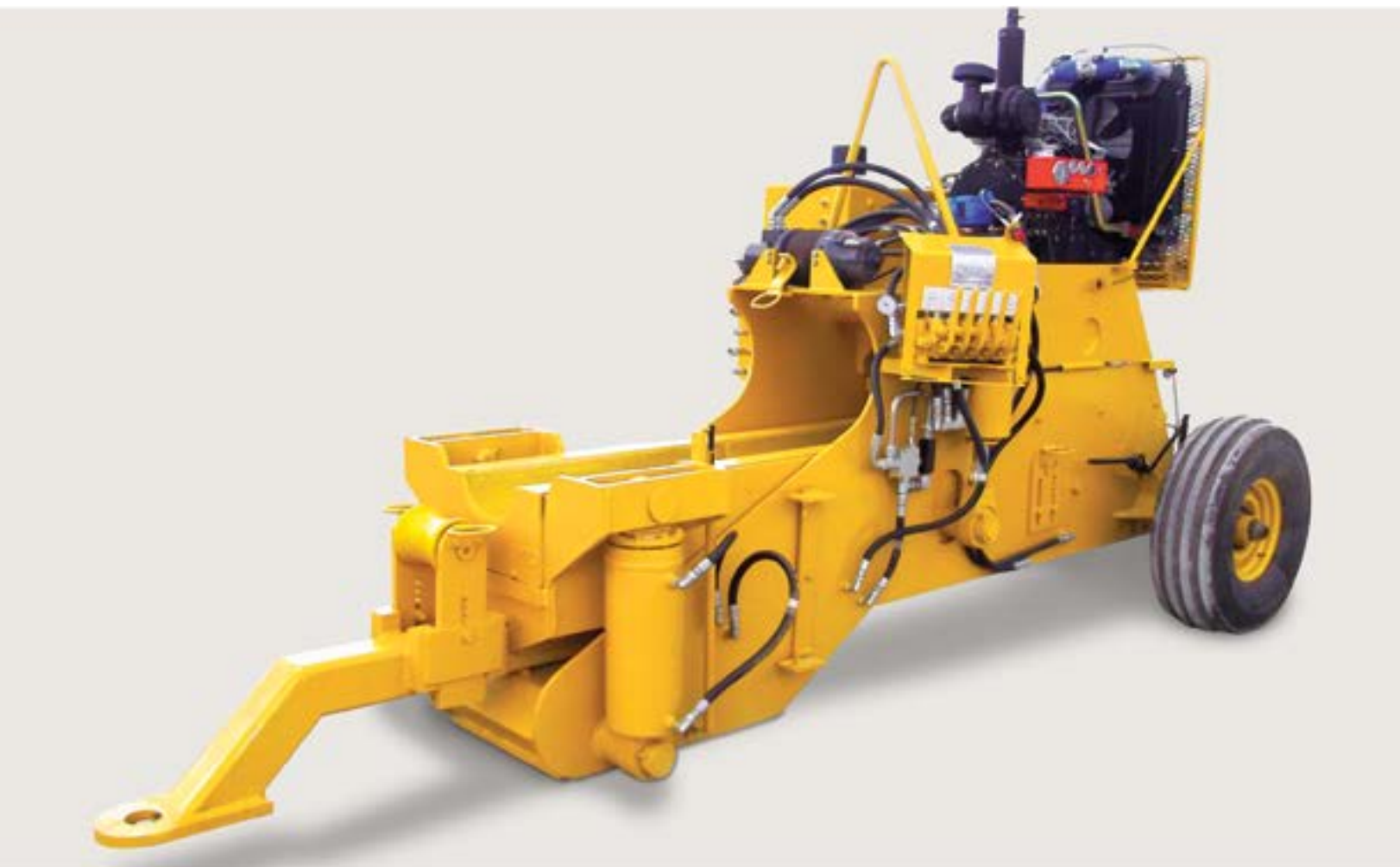


DMI | TOUGH

BENDERS

PIPE BENDING MACHINE

OPEN FACE 6" - 20"



Design Features

- Hydraulic Mandrel connection with 3/8" quick disconnect couplings
- T1 Steel body construction for long life and extra strength
- Calibrated Indicator Rod for precise repeatable pipe bends
- Single operator control station for all functions
- PTFE sealing system in all cylinders
- Designed to bend all grades of API-5L pipe within its range
- Easily towed on the right of way by a suitable tractor
- Towing eye can be raised and lowered by actuating the Stiffback controls

HYDRAULICS

	BORE (IN)	STROKE (IN)	ROD (IN)
InBoard Cylinder	7	6	2.25
OutBoard Cylinder	8	14	6
Pin Up Cylinder	5	23	2.25
Pump Type	Vane, Fix Volume		
Pump Flow	46 gpm		
Valve Type	Manual, 3 or 5 Section		
Filtration	3 Micron, Pressure Line		
Hydraulic System Max Operating Pressure	3000 psig		
Hydraulic Reservoir	50 gal	187.5 L	

PIPE BENDING CAPACITY

	Dia (in)
Minimum *	6.625
Maximum	20
* Can be configured as 4.5" OD pipe upon request	

SPECIFICATIONS

Length w/ tires	15'-10"	4,826 mm
Width	7'-7"	2,311 mm
Height	7'-8"	2,337 mm
Weight (lbs/kg)	12,700 lbs	5,773 kg
Pneumatic Tire Size	11.0 x 16	

ENGINES

Perkins Diesel, Tier 4	67	hp
Operating Speed	2200	rpm
Fuel Tank	15	gal

COMPRESSOR (IF EQUIPPED)

Manufacturer	Quincy QR-325
Drive Type	Hydraulic Motor
Pressure	210 psig
Flow	17.4 acfm @ 175 psig

WINCH

Manufacturer	Ramsey
Drive Type	Hydraulic Motor
Pulling Force	10,000 lbf
Cable Diameter	.4375"
Free Wheeling Drum	

OPTIONS AVAILABLE

- Hydraulic-driven Air Compressor
- Three-Stage Pump
- Tires or Tracks
- Cold weather operating kit (-40°) available
- Extra capacity fuel tank
- Low fuel level indicator
- Working and warning lights

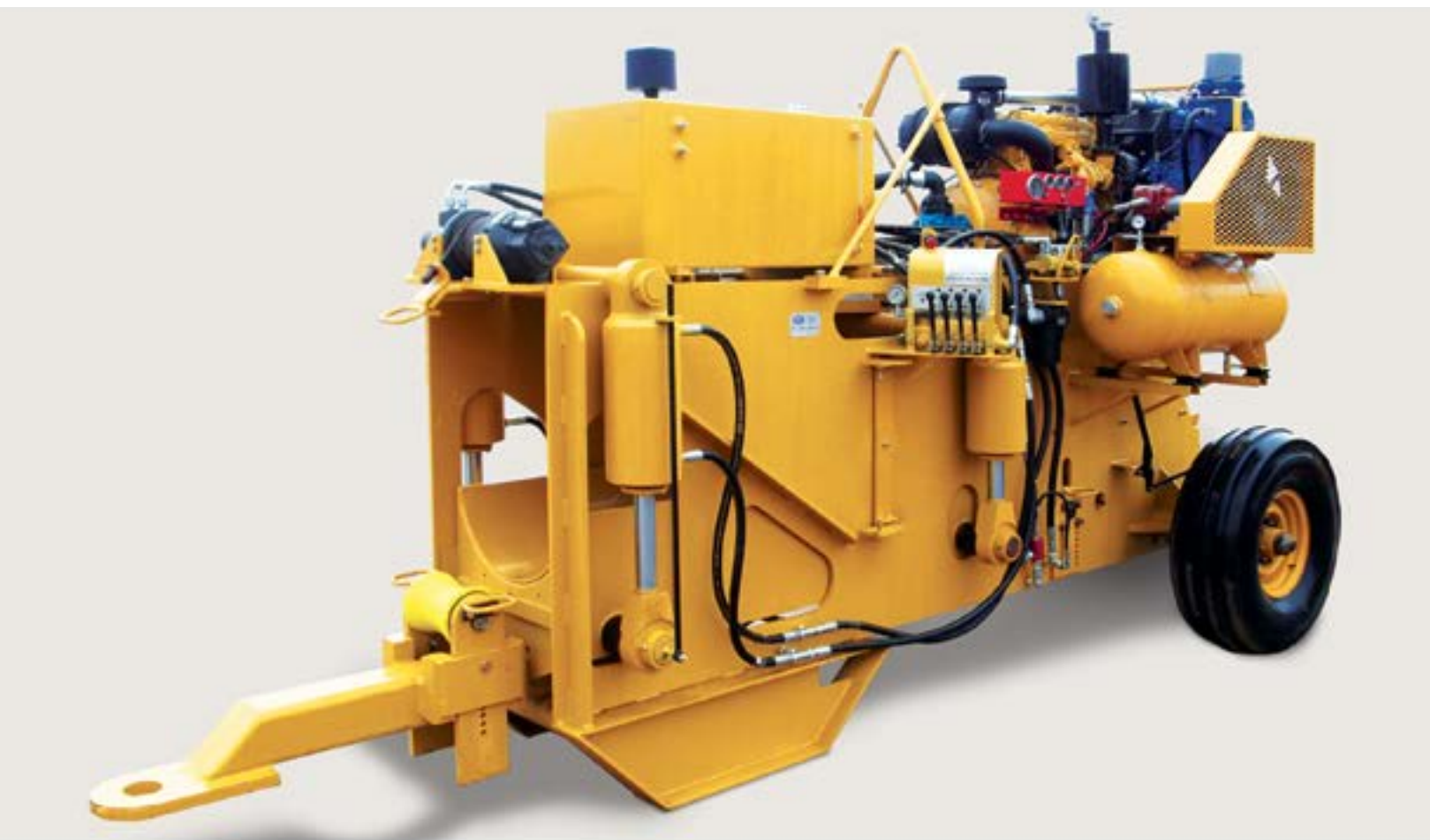
Disclaimer:

Technical information provided for this equipment regarding performance, specifications, dimension and weights can vary depending on final configuration of the equipment. Please contact DMI International for actual specifications at time of shipment.

DMI International does not accept responsibility for errors regarding the technical information, nor the consequences of any errors, nor the consequences to changes in the specifications contained herein. DMI International reserves the right to modify the equipment performance and specifications without notice.

PIPE BENDING MACHINE

STANDARD 6" - 20"



Design Features

- Hydraulic Mandrel connections with 3/8" quick disconnect couplings
- T1 Steel body construction for long life and extra strength
- Calibrated Indicator Rod for precise repeatable pipe bends
- Single operator control station for all functions
- PTFE sealing system in all cylinders
- Designed to bend all grades of API-5L pipe within its range
- Easily towed on the right of way by a suitable tractor
- Towing eye can be raised and lowered by actuating the Stiffback controls
- Extended to incorporate ease of loading and unloading pipe
- Featuring "Peak-A-Boo" hole for visual inspection of pipe

HYDRAULICS

	BORE (IN)	STROKE (IN)	ROD (IN)
InBoard Cylinder	7	6	2.25
OutBoard Cylinder	7	14	6
Pin Up Cylinder	4	23	2.25
Pump Type	Vane, Fix Volume		
Pump Flow	24 gpm		
Valve Type	Manual, 4 Section		
Filtration	3 Micron, Pressure Line		
Hydraulic System Max Operating Pressure	3000 psig		
Hydraulic Reservoir	50 gal	187.5 L	

PIPE BENDING CAPACITY

	Dia (in)
Minimum *	6.625
Maximum	20
* Can be configured as 4.5" OD pipe upon request	

SPECIFICATIONS

Length w/ tires	15'-3"	4,648 mm
Width	5'-10"	1,778 mm
Height	8'-4"	2,540 mm
Weight (lbs/kg)	11,050 lbs	5,012 kg
Pneumatic Tire Size	11.0 x 16	
Track Size	10 Ton	

ENGINES

Perkins Diesel, Tier 4	67	hp
Operating Speed	2200	rpm
Fuel Tank	15	gal

COMPRESSOR

Manufacturer	Quincy QR-325
Drive Type	Hydraulic Motor
Pressure	210 psig
Flow	17.4 acfm @ 175 psig

WINCH

Manufacturer	Ramsey
Drive Type	Hydraulic Motor
Pulling Force	10,000 lbf
Cable Diameter	.4375"
Free Wheeling Drum	

OPTIONS AVAILABLE

- Caterpillar C4.4 Tier 3 Diesel Engine (Export ONLY)
- Hydraulic-driven Air Compressor
- Two Stage Pump
- Tires or Tracks
- Cold weather operating kit (-40°) available
- Low fuel level indicator
- Working and warning lights

Disclaimer:

Technical information provided for this equipment regarding performance, specifications, dimension and weights can vary depending on final configuration of the equipment. Please contact DMI International for actual specifications at time of shipment.

DMI International does not accept responsibility for errors regarding the technical information, nor the consequences of any errors, nor the consequences to changes in the specifications contained herein. DMI International reserves the right to modify the equipment performance and specifications without notice.

PIPE BENDING MACHINE

SUPER 6" - 20"



Design Features

- Hydraulic Mandrel connection with 3/8" quick disconnect couplings
- T1 Steel body construction for long life and extra strength
- Calibrated Indicator Rod for precise repeatable pipe bends
- Single operator control station for all functions
- PTFE sealing system in all cylinders
- Designed to bend all grades of API-5L pipe within its range
- Easily towed on the right of way by a suitable tractor
- Towing eye can be raised and lowered by actuating the Stiffback controls

HYDRAULICS

	BORE (IN)	STROKE (IN)	ROD (IN)
InBoard Cylinder	8	6	2.25
OutBoard Cylinder	8	14	6
Pin Up Cylinder	5	23	2.25
Pump Type	Vane, Fix Volume		
Pump Flow	46 gpm		
Valve Type	Manual, 3 or 5 Section		
Filtration	3 Micron, Pressure Line		
Hydraulic System Max Operating Pressure	3000 psig		
Hydraulic Reservoir	50 gal	187.5 L	

PIPE BENDING CAPACITY

	Dia (in)
Minimum *	6.625
Maximum	20
* Can be configured as 4.5" OD pipe upon request	

SPECIFICATIONS

Length w/ tires	19'-4"	5,588 mm
Width	7'-6"	2,286 mm
Height	7'-8"	2,337 mm
Weight with Tires (lbs/kg)	14,160 lbs	6,436 kg
Pneumatic Tire Size	11.0 x 16	
Weight with Tracks (lbs/kg)	16,400 lbs	7,439 kg
Track Size	10 Ton	

ENGINES

Perkins Diesel, Tier 4	67	hp
Operating Speed	2200	rpm
Fuel Tank	15	gal

COMPRESSOR (IF EQUIPPED)

Manufacturer	Quincy QR-325
Drive Type	Hydraulic Motor
Pressure	210 psig
Flow	17.4 acfm @ 175 psig

WINCH

Manufacturer	Ramsey
Drive Type	Hydraulic Motor
Pulling Force	10,000 lbf
Cable Diameter	.4375"
Free Wheeling Drum	

OPTIONS AVAILABLE

- Caterpillar C4.4 Tier 3 Diesel Engine (Export ONLY)
- Two or Three Stage Pump
- Hydraulic-driven Air Compressor
- Tires or Tracks
- Cold weather operating kit (-40°) available
- Extra capacity fuel tank
- Low fuel level indicator
- Working and warning lights

Disclaimer:

Technical information provided for this equipment regarding performance, specifications, dimension and weights can vary depending on final configuration of the equipment. Please contact DMI International for actual specifications at time of shipment.

DMI International does not accept responsibility for errors regarding the technical information, nor the consequences of any errors, nor the consequences to changes in the specifications contained herein. DMI International reserves the right to modify the equipment performance and specifications without notice.

PIPE BENDING MACHINE

SUPER 16" - 30"



Design Features

- Hydraulic Mandrel connections available with five section valve
- Two Stage Pump standard
- T1 Steel body construction for long life and extra strength
- Calibrated Indicator Rod for precise repeatable pipe bends
- Single operator control station for all functions
- PTFE sealing system in all cylinders
- Designed to bend all grades of API-5L pipe within its range
- Easily towed on the right of way by a suitable tractor
- Towing eye can be raised and lowered by actuating the Stiffback controls
- Hydraulic Pilot Controlled valve system
- Safety steps provide access to pipe from operator stand
- Control valve sections sized for precise flow and metering
- Bend pressure control at operator console
- Loading isolation valves
- Large extra capacity filter

HYDRAULICS

	BORE (IN)	STROKE (IN)	ROD (IN)
InBoard Cylinder	8	5	2.25
OutBoard Cylinder	11	19	8
Pin Up Cylinder	6	23	4
Clamp Cylinder			
Pump Type	Vane, Fix Volume		
Pump Flow	48 gpm		
Valve Type	3 or 5 Section		
Filtration	3 Micron, Pressure Line		
Hydraulic System Max Operating Pressure	3000 psig		
Hydraulic Reservoir	85 gal	321 L	

PIPE BENDING CAPACITY

	Dia (in)
Minimum	16
Maximum	30

COMPRESSOR

Manufacturer	Quincy QR-370
Drive Type	Hydraulic Motor
Pressure	210 psig
Flow	49.3 acfm @ 175 psig

SPECIFICATIONS

Length	22'-6"	6,858 mm
Width	8'-3"	2,515 mm
Height	9'-1"	2,768 mm
Weight (lbs/kg)	29,500 lbs	13,409 kg
Track Size	15 Ton	

WINCH

Manufacturer	Ramsey
Drive Type	Hydraulic Motor
Pulling Force	20,000 lbf
Cable Diameter	.5625"
Free Wheeling Drum	

ENGINES

Perkins Diesel, Tier 4	109	hp
Operating Speed	2200	rpm
Fuel Tank	26	gal

OPTIONS AVAILABLE

- Caterpillar C4.4 Tier 3 Diesel Engine (Export ONLY)
- Hydraulic-driven Air Compressor
- Hydraulic Mandrel connection with 1/2" quick disconnect couplings
- Cold weather operating kit (-40°) available
- Larger fuel tank available on newer models
- Low fuel level indicator
- Working lights

Disclaimer:

Technical information provided for this equipment regarding performance, specifications, dimension and weights can vary depending on final configuration of the equipment. Please contact DMI International for actual specifications at time of shipment.

DMI International does not accept responsibility for errors regarding the technical information, nor the consequences of any errors, nor the consequences to changes in the specifications contained herein. DMI International reserves the right to modify the equipment performance and specifications without notice.

PIPE BENDING MACHINE

SUPER ELITE 22" - 36"



Design Features

- Two Stage Pump
- T1 Steel Body Construction for long life and extra strength
- Calibrated Indicator Rod for precise repeatable pipe bends
- Single operator control station for all functions
- PTFE sealing system in all cylinders
- Designed to bend all grades of API-5L pipe within its range
- Easily towed on the right of way by a suitable tractor
- Towing eye can be raised and lowered by actuating the Stiffback controls
- Control valve sections sized for precise flow and metering
- Best in Class cycle time provides 72% performance increase
- Bend pressure control at operator console
- Extra capacity dual fan oil cooler
- Large extra capacity filter

HYDRAULICS			
	BORE (IN)	STROKE (IN)	ROD (IN)
InBoard Cylinder	7	5	2.25
OutBoard Cylinder	11	19	9
Pin Up Cylinder	6	23	4
Clamp Cylinder			
Pump Type	Vane, Fix Volume		
Pump Flow	105 gpm		
Valve Type	Manual, 3 or 5 Section		
Filtration	3 Micron, Pressure Line		
Hydraulic System Max Operating Pressure	3000 psig		
Hydraulic Reservoir	125 gal	473 L	

PIPE BENDING CAPACITY

	Dia (in)
Minimum	22
Maximum	36

COMPRESSOR

Manufacturer	Quincy QR-390
Drive Type	Hydraulic Motor
Pressure	210 psig
Flow	67.0 acfm @ 175 psig

SPECIFICATIONS

Length	24'-1"	7,340 mm
Width	8'-8"	2,642 mm
Height	10'-0"	3,048 mm
Weight (lbs/kg)	57,000 lbs	25,909 kg
Track Size	15 Ton	

WINCH

Manufacturer	Ramsey
Drive Type	Hydraulic Motor
Pulling Force	20,000 lbf
Cable Diameter	.5625"
Free Wheeling Drum	

ENGINES

Perkins Diesel 1204F, Tier 4	174	hp
Operating Speed	2200	rpm
Fuel Tank	80	gal

OPTIONS AVAILABLE

- Perkins 1106D, 173 hp, Tier 3 (Export ONLY)
- Hydraulic-driven Air Compressor
- Hydraulic Mandrel controls with five section valve & 1/2" quick disconnect couplings
- Cold weather operating kit (-40°) available

*80 Gallon fuel tank only on Tier 4 models

Disclaimer:

Technical information provided for this equipment regarding performance, specifications, dimension and weights can vary depending on final configuration of the equipment. Please contact DMI International for actual specifications at time of shipment.

DMI International does not accept responsibility for errors regarding the technical information, nor the consequences of any errors, nor the consequences to changes in the specifications contained herein. DMI International reserves the right to modify the equipment performance and specifications without notice.

PIPE BENDING MACHINE

SUPER 32" - 42"



Design Features

- High Volume variable Piston Pump
- T1 Steel body construction for long life and extra strength
- Calibrated Indicator Rod for precise repeatable pipe bends
- Single operator control station for all functions
- PTFE sealing system in all cylinders
- Designed to bend all grades of API-5L pipe within its range
- Easily towed on the right of way by a suitable tractor
- Towing eye can be raised and lowered by actuating the Stiffback controls
- Hydraulic remote control valve system
- Bend pressure control at operator console
- Large extra capacity filter

HYDRAULICS

	BORE (IN)	STROKE (IN)	ROD (IN)
InBoard Cylinder	10	5	3.5
OutBoard Cylinder	14	18	8
Pin Up Cylinder	6	23	4
Clamp Cylinder			
Pump Type	Pressure Compensated Piston Pump		
Pump Flow	75 gpm		
Valve Type	Manual, 3 or 5 Section		
Filtration	3 Micron, Pressure Line		
Hydraulic System Max Operating Pressure	3500 psig		
Hydraulic Reservoir	90 gal	340 L	

PIPE BENDING CAPACITY

	Dia (in)
Minimum	32
Maximum	42

COMPRESSOR (optional)

Manufacturer	Quincy QR-390, Stand Alone
Drive Type	Deutz Engine
Pressure	210 psig
Flow	67.0 acfm @ 175 psig

SPECIFICATIONS

Length	26'-4"	8,026 mm
Width	9'-10"	2,997 mm
Height	10'-6"	3,200 mm
Weight (lbs/kg)	78,000 lbs	35,455 kg
Track Size	30 Ton	

WINCH

Manufacturer	DP
Drive Type	Hydraulic Motor
Pulling Force	20,000 lbf
Cable Diameter	.5625"
Free Wheeling Drum	

ENGINES

Perkins 1206F, Tier 4	225	hp
Operating Speed	2200	rpm
Fuel Tank	25	gal

OPTIONS AVAILABLE

- Perkins 1206D, 225 hp, Tier 3 (Export ONLY)
- Stand alone Air Compressor
- Hydraulic-driven Air Compressor
- Hydraulic Mandrel controls with five section valve & 3/4" quick disconnect couplings
- Hydraulic Oil Cooler
- Cold weather operating kit (-40°) available

Disclaimer:

Technical information provided for this equipment regarding performance, specifications, dimension and weights can vary depending on final configuration of the equipment. Please contact DMI International for actual specifications at time of shipment.

DMI International does not accept responsibility for errors regarding the technical information, nor the consequences of any errors, nor the consequences to changes in the specifications contained herein. DMI International reserves the right to modify the equipment performance and specifications without notice.

PIPE BENDING MACHINE

SUPER 36" - 48"



Design Features

- Two-Stage Pump
- T1 Steel body construction for long life and extra strength
- Calibrated Indicator Rod for precise repeatable pipe bends
- Single operator control station for all functions
- PTFE sealing system in all cylinders
- Designed to bend all grades of API-5L pipe within its range
- Easily towed on the right of way by a suitable tractor
- Towing eye can be raised and lowered by actuating the Stiffback controls
- Hydraulic remote controls valve system
- Bend pressure control at operator console
- OSHA Gate on operator station
- Large extra capacity filter

HYDRAULICS

	BORE (IN)	STROKE (IN)	ROD (IN)
InBoard Cylinder	10	5	4.5
OutBoard Cylinder	14	18	9
Pin Up Cylinder	6	23	4
Clamp Cylinder			
Pump Type	Vane, Fix Volume		
Pump Flow	110 gpm		
Valve Type	5 Section		
Filtration	3 Micron, Pressure Line		
Hydraulic System Max Operating Pressure *	2500 psig		
Hydraulic Reservoir	290 gal	1096 L	

PIPE BENDING CAPACITY

	Dia (in)
Minimum	36
Maximum	48

COMPRESSOR (optional)

Manufacturer	Quincy QR-390, Stand Alone
Drive Type	Deutz Engine
Pressure	210 psig
Flow	67.0 acfm @ 175 psig

SPECIFICATIONS

Length	32'-3"	9,830 mm
Width	12'-6" *	3,810 mm
Height	10'-10"	3,302 mm
Weight (lbs/kg)	120,750 lbs	54,886 kg
Track Size	50 Ton	

WINCH

Manufacturer	Ramsey
Drive Type	Hydraulic Motor
Pulling Force	20,000 lbf
Cable Diameter	.5625"
Free Wheeling Drum	

ENGINES

Perkins 1206F, Tier 4	250	hp
Operating Speed	2200	rpm
Fuel Tank	80	gal

OPTIONS AVAILABLE

- Cat C7.1 or Perkins 1206D, 250 hp, Tier 3 (Export ONLY)
- Stand alone Air Compressor
- Hydraulic-driven Air Compressor
- Hydraulic Mandrel controls with five section valve & 3/4" quick disconnect couplings
- Cold weather operating kit (-40°) available
- Working lights

* Actual width may vary
* 3000 psig intermittent, may vary with oil viscosity

Disclaimer:

Technical information provided for this equipment regarding performance, specifications, dimension and weights can vary depending on final configuration of the equipment. Please contact DMI International for actual specifications at time of shipment.

DMI International does not accept responsibility for errors regarding the technical information, nor the consequences of any errors, nor the consequences to changes in the specifications contained herein. DMI International reserves the right to modify the equipment performance and specifications without notice.

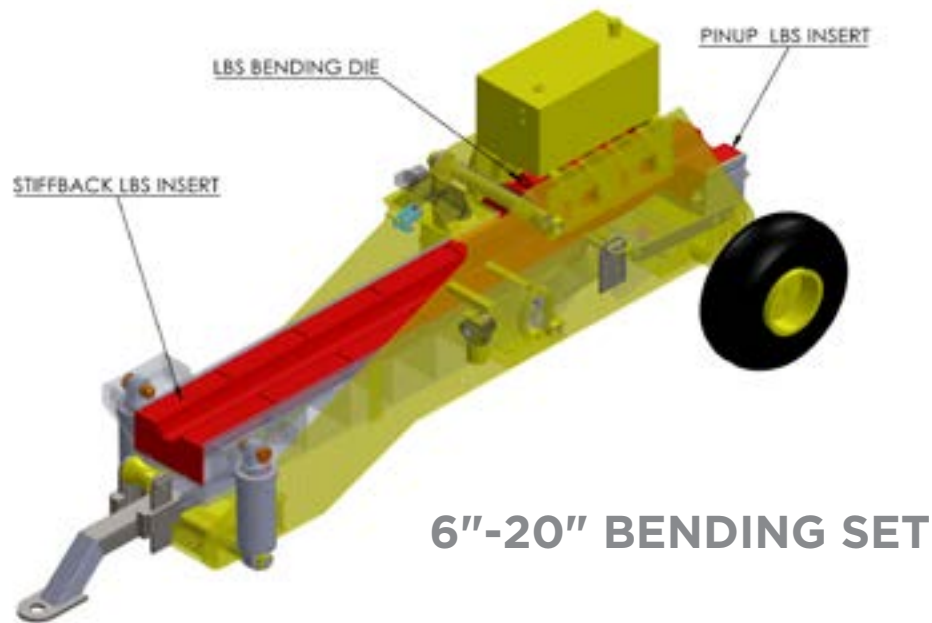


DMI | PRIDE



BENDING SETS & MANDRELS

LINED BENDING SETS



6''-20'' BENDING SET

SPECIFICATIONS FOR STANDARD 6'' - 20'' BENDING SETS							
		LENGTH		WIDTH		HEIGHT	
		in	mm	in	mm	in	mm
Standard 6 - 20	Stiffback	85.5	2172	21.25	540	10	254
	Pin Up	13.25	337	21.25	540	10	254
	Die	41	1041	24	610	16	406

STANDARD 6'' - 20''		
SIZE	WEIGHT	
	lb	kg
6''	1240	563
8''	1280	581
10''	1200	544
12''	1200	544
14''	1440	653
16''	1280	581
18''	1550	703
20''	1175	533

SPECIFICATIONS FOR SUPER 6'' - 20'' BENDING SETS							
		LENGTH		WIDTH		HEIGHT	
		in	mm	in	mm	in	mm
Super 6 - 20	Stiffback	120.5	3061	21.25	540	10	254
	Pin Up	13.25	337	21.25	540	10	254
	Die	41	1041	24	610	16	406

Dimensions shown for bending sets are shipping dimensions.

SUPER 6'' - 20''		
SIZE	WEIGHT	
	lb	kg
6''	1300	590
8''	1380	626
10''	1460	662
12''	1460	662
14''	1550	703
16''	1620	735
18''	1840	835
20''	1220	553

16''-30'' AND ABOVE BENDING SET



SPECIFICATIONS FOR SUPER 16'' - 30'' BENDING SETS							
		LENGTH		WIDTH		HEIGHT	
		in	mm	in	mm	in	mm
Super 16 - 30	Stiffback	87	2210	30	768	15	365
	Pin Up	38	965	30	768	15	365
	Die	70	1778	38	965	27	686
	Clamps	19	483	10	254	7	178

SPECIFICATIONS FOR SUPER 22'' - 36'' BENDING SETS							
		LENGTH		WIDTH		HEIGHT	
		in	mm	in	mm	in	mm
Super 22 - 36	Stiffback	88	2235	37	940	18	457
	Pin Up	37	940	37	940	18	457
	Die	70	1778	41	1041	25	635
	Clamps	24	610	10	254	12	305

SPECIFICATIONS FOR SUPER 32'' - 42'' BENDING SETS							
		LENGTH		WIDTH		HEIGHT	
		in	mm	in	mm	in	mm
Super 32 - 42	Stiffback	98	2489	44	1118	20	508
	Pin Up	53	1346	44	1118	20	508
	Die	77	1956	48	1219	25	635
	Clamps	28	711	17	432	10	254

SPECIFICATIONS FOR SUPER 36'' - 48'' BENDING SETS							
		LENGTH		WIDTH		HEIGHT	
		in	mm	in	mm	in	mm
Super 36 - 48	Stiffback (long)	114	2896	53	1346	25	635
	Stiffback (short)	99	2515	53	1346	25	635
	Pin Up	53	1346	53	1346	25	635
	Die	81	2057	54.5	1384	25	635
	Clamps	32	813	23	584	13	330



Pipe Bending Diameters 6" - 20"

NOMINAL PIPE O.D.	MAXIMUM WALL THICKNESS BY GRADE						RECOMMENDED BEND		
IN/MM	X52	X60	X65	X70	X80	X100	DEGREE PER ARC FOOT	RADIUS FEET	MAXIMUM 40 FOOT JOINT
20/508	0.627	0.550	0.511	0.477	0.421	0.341	0.90	69	27.00
18/457	0.785	0.688	0.638	0.595	0.525	0.424	1.10	52	33.00
16/406	1.025	0.894	0.828	0.771	0.678	0.545	1.50	38	45.00
14/356	1.435	1.240	1.143	1.059	0.925	0.738	1.70	34	51.00
12.75/324	1.900	1.616	1.478	1.362	1.178	0.927	2.30	25	69.00
10.75/273	-	-	-	-	-	1.532	2.80	20	84.00
8.625/219	-	-	-	-	-	-	3.80	15	114.00
6.625/168	-	-	-	-	-	-	4.50	13	135.00

Pipe Bending Diameters Open Face 6" - 20"

NOMINAL PIPE O.D.	MAXIMUM WALL THICKNESS BY GRADE						RECOMMENDED BEND		
IN/MM	X52	X60	X65	X70	X80	X100	DEGREE PER ARC FOOT	RADIUS FEET	MAXIMUM 40 FOOT JOINT
20/508	1.085	0.944	0.874	0.813	0.713	0.572	0.83	69	24.90
18/457	1.399	1.210	1.116	1.036	0.905	0.722	1.10	52	33.00
16/406	1.936	1.651	1.512	1.395	1.208	0.953	1.51	38	45.30
14/356	-	-	-	-	1.775	1.357	1.70	34	51.00
12.75/324	-	-	-	-	-	1.835	2.30	25	69.00
10.75/273	-	-	-	-	-	-	2.86	20	85.80
8.625/219	-	-	-	-	-	-	3.82	15	114.60
6.625/168	-	-	-	-	-	-	4.41	13	132.20

Pipe Bending Diameters 32" - 42"

NOMINAL PIPE O.D.	MAXIMUM WALL THICKNESS BY GRADE						RECOMMENDED BEND		
IN/MM	X52	X60	X65	X70	X80	X100	DEGREE PER ARC FOOT	RADIUS FEET	MAXIMUM 40 FOOT JOINT
42/1067	-	1.856	1.706	1.579	1.373	1.090	0.50	115	13.00
40/1016	-	-	1.914	1.768	1.535	1.215	0.50	115	13.00
38/965	-	-	-	-	1.731	1.364	0.50	115	13.00
36/914	-	-	-	-	1.974	1.547	0.50	115	13.00
34/864	-	-	-	-	-	1.776	0.55	104	14.30
32/813	-	-	-	-	-	-	0.58	98	15.08

Pipe Bending Diameters 36" - 48"

NOMINAL PIPE O.D.	MAXIMUM WALL THICKNESS BY GRADE						RECOMMENDED BEND		
IN/MM	X52	X60	X65	X70	X80	X100	DEGREE PER ARC FOOT	RADIUS FEET	MAXIMUM 40 FOOT JOINT
48/1219	-	-	-	1.857	1.613	1.278	0.50	115	12.75
46/1168	-	-	-	-	1.779	1.405	0.50	115	12.75
44/1118	-	-	-	-	1.975	1.544	0.50	115	12.75
42/1067	-	-	-	-	-	1.731	0.50	115	12.75
40/1016	-	-	-	-	-	1.946	0.55	115	12.75
38/965	-	-	-	-	-	-	0.50	115	12.75
36/914	-	-	-	-	-	-	0.50	115	12.75

- A cell marked with a (-) represents the ability to bend up to 2.00" thick. For wall thickness greater than that, contact DMI.
- Figures above represent empirical data and are recommendation only. They do not constitute a warranty.
- All bends are based on the use of DMI mandrels and approved Die Sets.
- For heavy wall pipe special Die Sets may be required.
- Figures shown above are provided as "Average" and will vary depending on the following:
 - Actual wall thickness of the pipe.
 - Actual Yield Stress of the pipe.
 - Skill of the Operators handling the Bending Machine and Mandrel.
 - Origin and Quality of the pipe.
 - Type of Die and Bending Set being used.
- Normal unbent tangent for PBM 6-20 is 5'
- Normal unbent tangent for PBM 16-30 is 6'
- Normal unbent tangent for PBM 22-36 is 6'
- Normal unbent tangent for PBM 32-42 is 7'
- Normal unbent tangent for PBM 36-48 is:
 - 11' for Stiffback end with pipe support
 - 13' for Stiffback end with NO pipe support
 - 8' for Pinup end with pipe support
 - 9' for Pinup end with NO pipe support

Disclaimer:
Technical information provided for this equipment regarding performance, specifications, dimension and weights can vary depending on final configuration of the equipment. Please contact DMI International for actual specifications at time of shipment.
DMI International does not accept responsibility for errors regarding the technical information, nor the consequences of any errors, nor the consequences to changes in the specifications contained herein. DMI International reserves the right to modify the equipment performance and specifications without notice.

DMI Hydraulic SUPER Pipe Bending Machines 6" - 48" Pipe Bending Data



Pipe Bending Diameters Super 6" - 20"

NOMINAL PIPE O.D.	MAXIMUM WALL THICKNESS BY GRADE						RECOMMENDED BEND		
IN/MM	X52	X60	X65	X70	X80	X100	DEGREE PER ARC FOOT	RADIUS FEET	MAXIMUM 40 FOOT JOINT
20/508	1.454	1.257	1.158	1.074	0.938	0.748	2.72	69	24.35
18/457	1.930	1.648	1.511	1.395	1.209	0.955	3.61	52	32.32
16/406	-	-	-	1.956	1.667	1.288	4.95	38	44.31
14/356	-	-	-	-	-	1.943	5.58	34	49.95
12.75/324	-	-	-	-	-	-	7.55	25	67.59
10.75/273	-	-	-	-	-	-	9.38	20	83.97
8.625/219	-	-	-	-	-	-	12.53	15	112.17
6.625/168	-	-	-	-	-	-	14.47	13	129.53

Pipe Bending Diameters Super 16" - 30"

NOMINAL PIPE O.D.	MAXIMUM WALL THICKNESS BY GRADE						RECOMMENDED BEND		
IN/MM	X52	X60	X65	X70	X80	X100	DEGREE PER ARC FOOT	RADIUS FEET	MAXIMUM 40 FOOT JOINT
30/762	1.634	1.409	1.298	1.203	1.049	0.836	0.60	96	16.20
28/711	1.937	1.662	1.527	1.413	1.228	0.974	0.65	88	17.60
26/660	-	-	1.839	1.695	1.467	1.156	0.70	82	18.90
24/610	-	-	-	-	1.800	1.403	0.75	76	20.25
22/559	-	-	-	-	-	1.763	0.80	72	21.60
20/508	-	-	-	-	-	-	0.90	64	24.40
18/457	-	-	-	-	-	-	1.10	52	29.70
16/406	-	-	-	-	-	-	1.51	38	40.80

Pipe Bending Diameters Super 22" - 36"

NOMINAL PIPE O.D.	MAXIMUM WALL THICKNESS BY GRADE						RECOMMENDED BEND		
IN/MM	X52	X60	X65	X70	X80	X100	DEGREE PER ARC FOOT	RADIUS FEET	MAXIMUM 40 FOOT JOINT
36/914	-	1.917	1.760	1.627	1.413	1.119	0.50	115	13.50
34/864	-	-	-	1.867	1.616	1.274	0.55	104	14.80
32/813	-	-	-	-	1.875	1.469	0.58	98	15.60
30/762	-	-	-	-	-	1.721	0.60	95	16.20
28/711	-	-	-	-	-	-	0.65	88	17.60
26/660	-	-	-	-	-	-	0.70	82	18.90
24/610	-	-	-	-	-	-	0.75	76	20.30
22/559	-	-	-	-	-	-	0.80	72	21.60

Pipe Bending Diameters Super 32" - 42"

NOMINAL PIPE O.D.	MAXIMUM WALL THICKNESS BY GRADE							RECOMMENDED BEND		
IN/MM	X52	X60	X65	X70	X75	X80	X100	DEGREE PER ARC FOOT	RADIUS FEET	MAXIMUM 40 FOOT JOINT
42/1066	-	-	-	-	-	1.838	1.488	0.50	115	13.00
40/1016	-	-	-	-	-	-	1.621	0.50	115	13.00
38/965	-	-	-	-	-	-	1.832	0.50	115	13.00
36/914	-	-	-	-	-	-	-	0.50	115	13.00
34/864	-	-	-	-	-	-	-	0.55	104	14.30
32/813	-	-	-	-	-	-	-	0.58	98	15.08

- A cell marked with a (-) represents the ability to bend up to 2.00" thick. For wall thickness greater than that, contact DMI.
- Figures above represent empirical data and are recommendation only. They do not constitute a warranty.
- All bends are based on the use of DMI mandrels and approved Die Sets.
- For heavy wall pipe special Die Sets may be required.
- Figures shown above are provided as "Average" and will vary depending on the following:
 - Actual wall thickness of the pipe.
 - Actual Yield Stress of the pipe.
 - Skill of the Operators handling the Bending Machine and Mandrel.
 - Origin and Quality of the pipe.
 - Type of Die and Bending Set being used.
- Normal unbent tangent for PBM 6-20 is 5'
- Normal unbent tangent for PBM 16-30 is 6'
- Normal unbent tangent for PBM 22-36 is 6'
- Normal unbent tangent for PBM 32-42 is 7'
- Normal unbent tangent for PBM 36-48 is:
 - 11' for Stiffback end with pipe support
 - 13' for Stiffback end with NO pipe support
 - 8' for Pinup end with pipe support
 - 9' for Pinup end with NO pipe support

Disclaimer:
Technical information provided for this equipment regarding performance, specifications, dimension and weights can vary depending on final configuration of the equipment. Please contact DMI International for actual specifications at time of shipment.

DMI International does not accept responsibility for errors regarding the technical information, nor the consequences of any errors, nor the consequences to changes in the specifications contained herein. DMI International reserves the right to modify the equipment performance and specifications without notice.

PNEUMATIC WEDGE MANDREL



6" and 8"



10" - 12"



12" - 20"

Pneumatic Wedge Mandrels

- Helps reduce buckling and out of round in the bend
- Adjustable for any wall thickness within specified mandrel range
- Pneumatic wedge mandrels are available in pipe sizes from 24" - 60" diameter
- For efficient operation the compressed air pressure should be 180 - 200 PSI (12.4 - 13.8 Bar)
- Maximum safe working pressure is 225 PSI (15.5 Bar)
- One man operated for expansion and contracting
- Powered travel available for 12" - 20" and up

PNEUMATIC WEDGE MANDREL

MODEL	PIPE SIZE		LENGTH		WIDTH		HEIGHT		VOLUME		WEIGHT	
	in	mm	in	mm	in	mm	in	mm	cu-ft	cu-m	lbs	kg
PWM 6	6	152	61	1549	6	152	6	152	1.3	0.04	150	68
PWM 8	8	203	71	1803	8.5	216	8.5	216	3.0	0.08	200	91
PWM 10-12	10-12	254-305	88	2235	11.5	292	11.5	292	6.7	0.19	564	256
PWM 12-14	12-14	305-356	108	2743	11	279	11	279	7.6	0.21	680	309
PWM 16	16	406	108	2743	14	356	14	356	12.3	0.35	754	343
PWM 18-20	18-20	457-508	108	2743	18	457	18	457	20.3	0.57	820	373
PWM 20-22	20-22	508-559	124	3150	18	457	18	457	23.3	0.66	950	432
PWM 24-26	24-26	610-660	140	3556	20	508	20	508	32.4	0.92	2310	1050
PWM 28-30	28-30	711-762	140	3556	26	660	26	660	54.8	1.55	2700	1227
PWM 30-32	30-32	762-813	140	3556	27	686	27	686	59.1	1.67	3200	1455
PWM 34-36	34-36	864-914	125	3175	31	787	31	787	69.5	1.97	4500	2045
PWM 36-38	36-38	914-965	160	4064	32	813	32	813	95	2.68	5650	2568
PWM 40-42	40-42	1016-1067	160	4064	38	965	38	965	134	3.79	6350	2886
PWM 42-44	42-44	1067-1118	160	4064	38	965	38	965	134	3.79	6350	2886
PWM 46-48	46-48	1168-1219	150	3810	43	1092	43	1092	161	4.54	7000	3182
PWM 52	52	1321	186	4724	45	1143	47	1194	228	6.45	10000	4545
PWM 56	56	1422	186	4724	46	1168	50	1270	248	7.01	12000	5455
PWM 60	60	1524	186	4724	50	1270	54	1372	291	8.23	15000	6818

Disclaimer:

Technical information provided for this equipment regarding performance, specifications, dimension and weights can vary depending on final configuration of the equipment. Please contact DMI International for actual specifications at time of shipment.

DMI International does not accept responsibility for errors regarding the technical information, nor the consequences of any errors, nor the consequences to changes in the specifications contained herein. DMI International reserves the right to modify the equipment performance and specifications without notice.

HYDRAULIC WEDGE MANDREL



Hydraulic Wedge Mandrels

The DMI Wedge Mandrel is used specifically to meet bending requirements of X65 and higher grade pipes. Operator controls all functions of the mandrel.

- Helps reduce buckling and out of round in the bend
- Power is provided by the bending machine hydraulic system or by an auxiliary power unit
- Models cover pipe sizes 24" - 60"

PIPE RANGES 24" - 30" | 30" - 36" | 36" - 42" | 40"- 48" | 52" - 60"

- Fast approach and powerful locking action is provided by double angle hardened steel wedges
- Auxiliary hydraulic power units and conversion kits (within mandrel's range) available at additional cost
- Non-Powered available 6" - 20"
- Powered available 12" - 60"

Disclaimer:
Technical information provided for this equipment regarding performance, specifications, dimension and weights can vary depending on final configuration of the equipment. Please contact DMI International for actual specifications at time of shipment.

DMI International does not accept responsibility for errors regarding the technical information, nor the consequences of any errors, nor the consequences to changes in the specifications contained herein. DMI International reserves the right to modify the equipment performance and specifications without notice.

HYDRAULIC WEDGE MANDREL												
MODEL	PIPE SIZE		LENGTH		WIDTH		HEIGHT		VOLUME		WEIGHT	
	in	mm	in	mm	in	mm	in	mm	cu-ft	cu-m	lbs	kg
HWM 10	10	254	90	2286	9.5	241	8.5	216	4.2	0.12	405	184
HWM 12	12	305	84	2134	9.5	241	10.5	267	4.8	0.14	437	199
HWM 14	14	356	84	2134	11	279	11	279	5.9	0.17	475	216
HWM 16	16	406	84	2134	11	279	13	330	7.0	0.20	750	341
HWM 18	18	457	92	2337	15	381	15	381	12.0	0.34	1025	466
HWM 20	20	508	92	2337	16	406	17	432	14.5	0.41	1250	568
HWM 12-16	12-16	305-406	84	2134	11	279	13	330	7.0	0.20	750	341

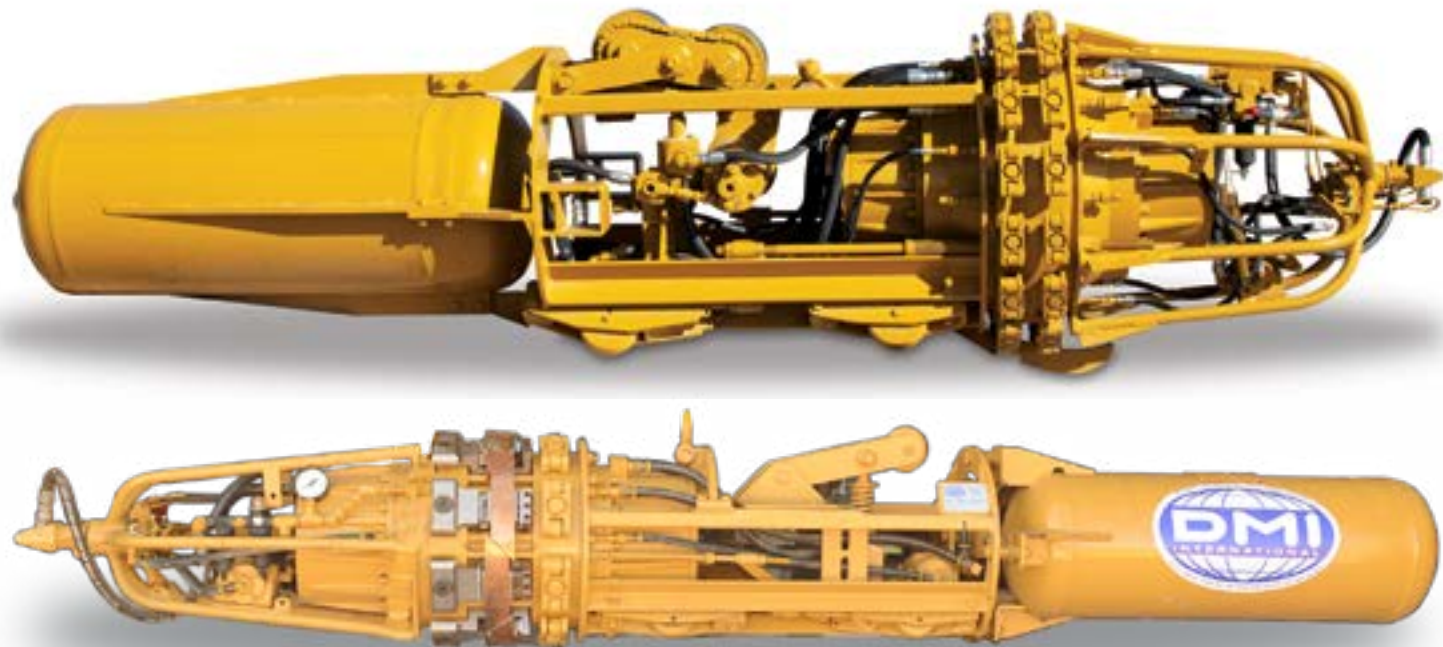
MULTIPLE SIZE HYDRAULIC WEDGE MANDREL												
MODEL	PIPE SIZE		LENGTH		WIDTH		HEIGHT		VOLUME		WEIGHT	
	in	mm	in	mm	in	mm	in	mm	cu-ft	cu-m	lbs	kg
MHWM 24-26	24-26	610-660	128	3251	22	559	21.5	546	35.0	0.99	2400	1091
MHWM 28-30	28-30	711-762	128	3251	25.5	648	24.5	622	46.3	1.31	2600	1182
MHWM 30-32	30-32	762-813	121	3073	31	787	30	762	65.1	1.84	2800	1273
MHWM 34-36	34-36	864-914	121	3073	29	737	30	762	60.9	1.73	3000	1364
MHWM 36-38	36-38	914-965	121	3073	29	737	30	762	60.9	1.73	4500	2045
MHWM 38-40	38-40	965-1016	128	3251	33	838	31.5	800	77.0	2.18	5750	2614
MHWM 40-42	40-42	1016-1067	128	3251	34	864	33	838	78.6	2.22	6000	2727
MHWM 46-48	46-48	1168-1219	128	3251	40	1016	38.5	978	114.1	3.23	7500	3409
MHWM 52-54	52-54	1321-1372	144	3658	54.5	1384	43	1092	195.3	5.53	13000	5909
MHWM 56	56	1422	144	3658	56.5	1435	47	1194	221.3	6.27	14500	6591
MHWM 58-60	58-60	1473-1524	144	3658	58.5	1486	49	1245	238.9	6.76	16750	7614





DMI | SERVICE

CLAMPS & CRADLES



Pneumatic Clamp and Pneumatic Clamp with Copper Backup Shoes

- Standard sizes 6"-60", available upon request
- Clamps 12"-60" will cover two pipe sizes by use of conversion kits
- Adjustable for various wall thickness within clamp's range
- Powered travel drive available on models 12"-60"
- For efficient operation the compressed air pressure should be 180-200 PSI. (12.4-13.8 Bar)
- Maximum safe working pressure is 225 PSI (15.5 Bar)



Self-Centering Internal Pneumatic Lineup Clamp

- Automatic centering mechanism helps reduce Hi-Lo
- Adjustable for various wall thickness within clamp's range
- Spring mounted reserve air tank provides sufficient air pressure for lining up incoming pipe joint
- For efficient operation the compressed air pressure should be 180 - 200 PSI (12.4 - 13.8 Bar)
- Maximum safe working pressure is 225 PSI (15.5 Bar)
- Pneumatic automatic centering clamps available in sizes 6" - 14"
- Optional copper back-up shoes



Internal Pneumatic Double Joint Clamp

- Designed specifically for use with a Double Joint Rack
- Available in sizes 16" to 60" and adjustable for various wall thickness within clamp's range
- Copper back-up shoes help prevent burn through
- For efficient operation the compressed air pressure should be 180-200 PSI. (12.4-13.8 Bar)
- Maximum safe working pressure is 225 PSI (15.5 Bar)
- Easy removal and installation of copper back-up shoes

NON POWERED CLAMP, PULL TYPE												
MODEL	PIPE SIZE		LENGTH		WIDTH		HEIGHT		VOLUME		WEIGHT	
	inch	mm	inch	mm	inch	mm	inch	mm	cu-ft	cu-m	lbs	kg
IPLC 6	6	152	38	965	5.5	140	6.5	165	0.8	0.02	98	45
IPLC 8	8	203	50	1270	7.5	191	7.5	191	1.6	0.05	130	59
IPLC 10 2-section	10	254	58	1473	12	305	12	305	4.8	0.14	178	81
IPLC 10 3-section	10	254	58	1473	12	305	12	305	4.8	0.14	212	96
IPLC 12 2-section	12-14	324-356	60	1524	10.75	273	10.75	273	4.0	0.11	204	93
IPLC 12 3-section	12-14	324-356	60	1524	10.75	273	10.75	273	4.0	0.11	257	117
IPLC 14-16	14-16	356-406	67	1702	13	330	13.5	343	6.8	0.19	225	102
IPLC 18-20	18-20	457-508	96	2438	16.5	419	18.5	470	17.0	0.48	418	190

Disclaimer:
Technical information provided for this equipment regarding performance, specifications, dimension and weights can vary depending on final configuration of the equipment. Please contact DMI International for actual specifications at time of shipment.
DMI International does not accept responsibility for errors regarding the technical information, nor the consequences of any errors, nor the consequences to changes in the specifications contained herein. DMI International reserves the right to modify the equipment performance and specifications without notice.

CLAMPS

POWERED CLAMP, LINE TRAVEL													
MODEL	PIPE SIZE		LENGTH		WIDTH		HEIGHT		VOLUME		WEIGHT		CFM
	in	mm	in	mm	in	mm	in	mm	cu-ft	cu-m	lbs	kg	
IPLC 10	10	254	62	1575	10	254	11.5	292	4.1	0.12	300	136	25
IPLC 12-14	12-14	305	109	2769	10.75	273	10.75	273	7.3	0.21	294	133	25
IPLC 14-16	14-16	356-406	112.5	2858	15	381	15	381	14.6	0.41	500	227	25
IPLC 16-18	16-18	406-457	91	2311	13	330	13	330	8.9	0.32	550	250	25
IPLC 20-22	20-22	508-559	102	2591	18	457	18	457	19.1	0.69	780	354	40
IPLC 24-26	24-26	610-660	111	2819	21	533	21	533	28.3	1.05	1010	458	40
IPLC 28-30	28-30	711-762	115	2870	28	711	28	711	52.2	1.45	1290	585	40
IPLC 30-32	30-32	762-813	115	2870	28	711	28	711	52.2	1.73	1400	635	40
IPLC 34-36	34-36	864-914	122	3099	34	864	35.5	902	85.2	2.41	1700	773	90
IPLC 36-38	36-38	914-965	128	3251	36	914	37.5	953	100.0	2.83	1750	795	90
IPLC 40-42	40-42	1016-1067	141	3581	38	965	38	965	117.8	3.94	3100	1406	90
IPLC 46-48	46-48	1168-1219	145	3683	45	1143	46.5	1181	175.6	4.97	3140	1427	90
IPLC 52-54	52-54	1321-1372	188	4775	52	1321	53.5	1359	302.7	8.57	4950	2250	90
IPLC 56	56	1422	188	4775	54	1372	55.5	1410	326.1	9.23	5400	2455	90
IPLC 60	60	1524	191	4851	58	1473	60	1524	384.7	10.89	6000	2727	90

Standard Features

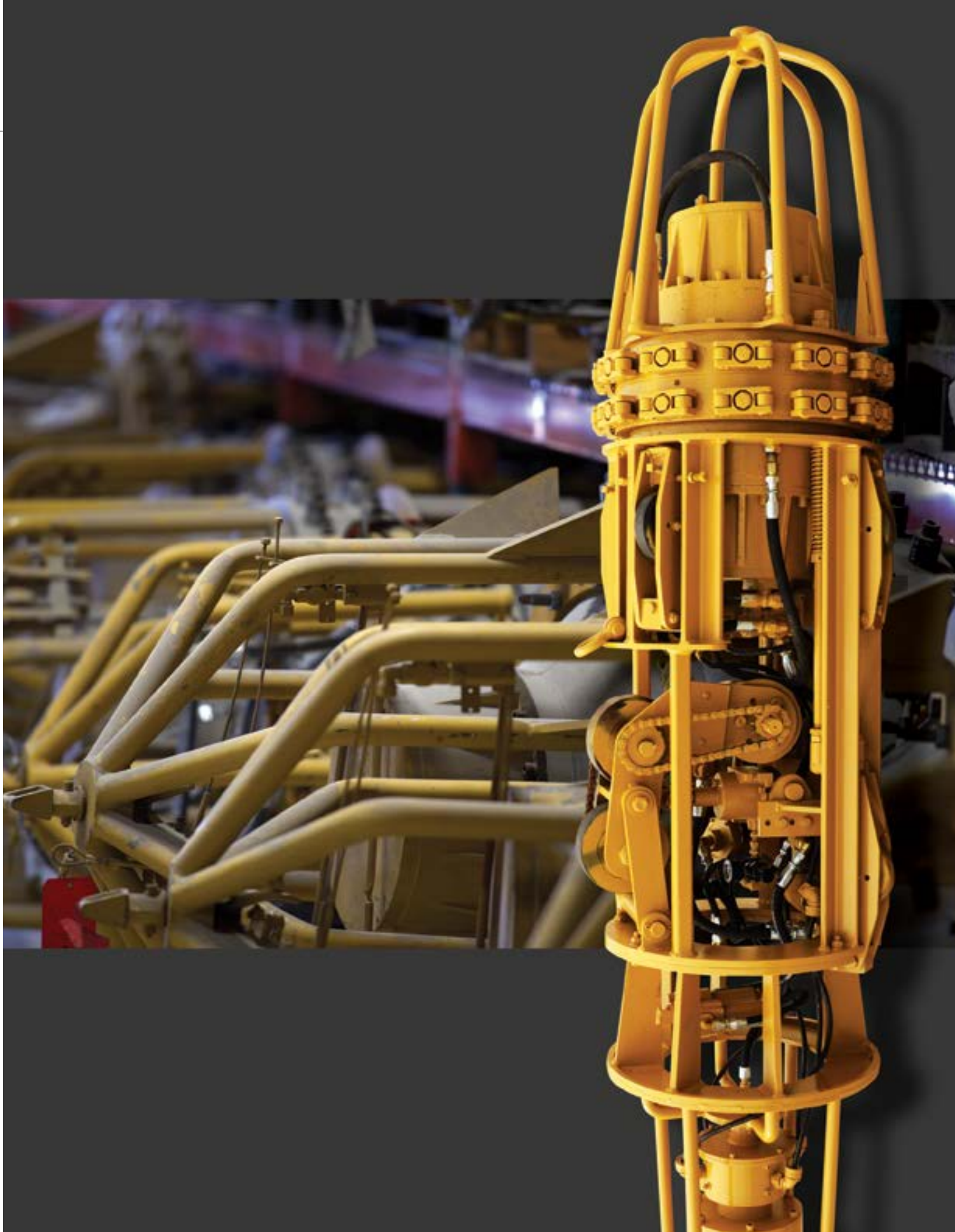
- 40' reach rod (125 lbs)
- 125' air hose (25 lbs)
- Standard Steel Pipe Compatibility (24"-up)

Additional Cost Features

- Dual side drive, capability of 35 degree grade
- Stainless steel pipe compatibility
- Storage skid
- Additional reach rod
- Emergency braking system

Disclaimer:
Technical information provided for this equipment regarding performance, specifications, dimension and weights can vary depending on final configuration of the equipment. Please contact DMI International for actual specifications at time of shipment.

DMI International does not accept responsibility for errors regarding the technical information, nor the consequences of any errors, nor the consequences to changes in the specifications contained herein. DMI International reserves the right to modify the equipment performance and specifications without notice.



ROLLER CRADLES



CRADLES			
SIZE	NUMBER OF ROLLERS PER ROLLER STRAND / SLING (SINGLE ONLY)	MAXIMUM RECOMMENDED WORKING LOAD	
IN		LB	KG
6"-12" SINGLE HEAD	10	12,000	5,443
6"-12" DUAL HEAD	10	15,600	7,075
12"-24"	14	28,662	12,982
24"-36"	12	56,500	25,628
36"-48"	16	69,390	31,475
48"-60"	18	105,380	47,800

Note: Single cradle has 1 cable strand looped over the head iron
Dual cradle has 2 cable strands looped over the head iron

CRADLES											
PIPE SIZE		LENGTH		WIDTH		HEIGHT		HEAD IRON WEIGHT		Total Weight	
IN	MM	IN	MM	IN	MM	IN	MM	LB	KG	LB	KG
6" - 12" SINGLE HEAD	152 - 305	21"	533	7"	178	16"	394	100	45	225	102
6" - 12" DUAL HEAD	152 - 305	25"	635	24"	610	12"	305	200	91	450	204
12" - 24"	305 - 610	37"	940	32"	813	18"	457	445	202	765	347
24" - 36"	610 - 914	57"	1448	54"	1372	20"	508	1150	552	2888	1310
36" - 48"	914 - 1219	73"	1854	64"	1626	25"	635	1540	699	3794	1721
48" - 60"	1219 - 1524	85"	2159	80"	2032	31"	787	3012	1366	5172	2346

Note: Shipping dimensions for Head Iron only. Total weight included 2 strands. A safety factor of 5:1 is used on the wire rope to determine working loads. Capacities should be recalculated if local laws or regulations require a different safety factor.

Design Features

- Various cradle assemblies for pipe sizes 6" (152mm) through 60" (1524mm) welded seam hang-up
- Slings for pipe sizes 2" (51mm) through 24" (610mm)
- Designed load capacity ensures safe handling of heavy wall pipe
- Multiple urethane rollers spaced to support the pipe evenly
- The wire rope assembly meets ANSI B-30-9 sling requirements, OSHA 1910.184 sling requirements and OSHA 1926.251 material handling requirements
- Head Iron designed using finite element analysis per ASME BTH-1, Service Class O, Design Category A
- Replacement urethane cradle rollers available
- Custom sizes available upon request

Caution

- Roller Cradles & Slings designed for verticle lifting only
- Never stand under a pipe when lifting or loading
- Use only equipment rated above the max load to be lifted
- Uneven load distribution imposes disproportionate loading on the individual sling legs

SLINGS					
SIZE	NUMBER OF ROLLERS PER SLING	WEIGHT		MAXIMUM RECOMMENDED WORKING LOAD *	
IN		LB	KG	LB	KG
2" - 8"	3	36	16	15,600	7,075
8" - 12"	5	56	25	15,600	7,075
12" - 24"	7	76	34	15,600	7,075

Slings are not intended to replace Roller Cradles for lifting pipe. Consult factory for usage guidelines.
*Wire rope capacity.

Disclaimer:
Technical information provided for this equipment regarding performance, specifications, dimension and weights can vary depending on final configuration of the equipment. Please contact DMI International for actual specifications at time of shipment.
DMI International does not accept responsibility for errors regarding the technical information, nor the consequences of any errors, nor the consequences to changes in the specifications contained herein. DMI International reserves the right to modify the equipment performance and specifications without notice.





DMI
DEPENDABLE

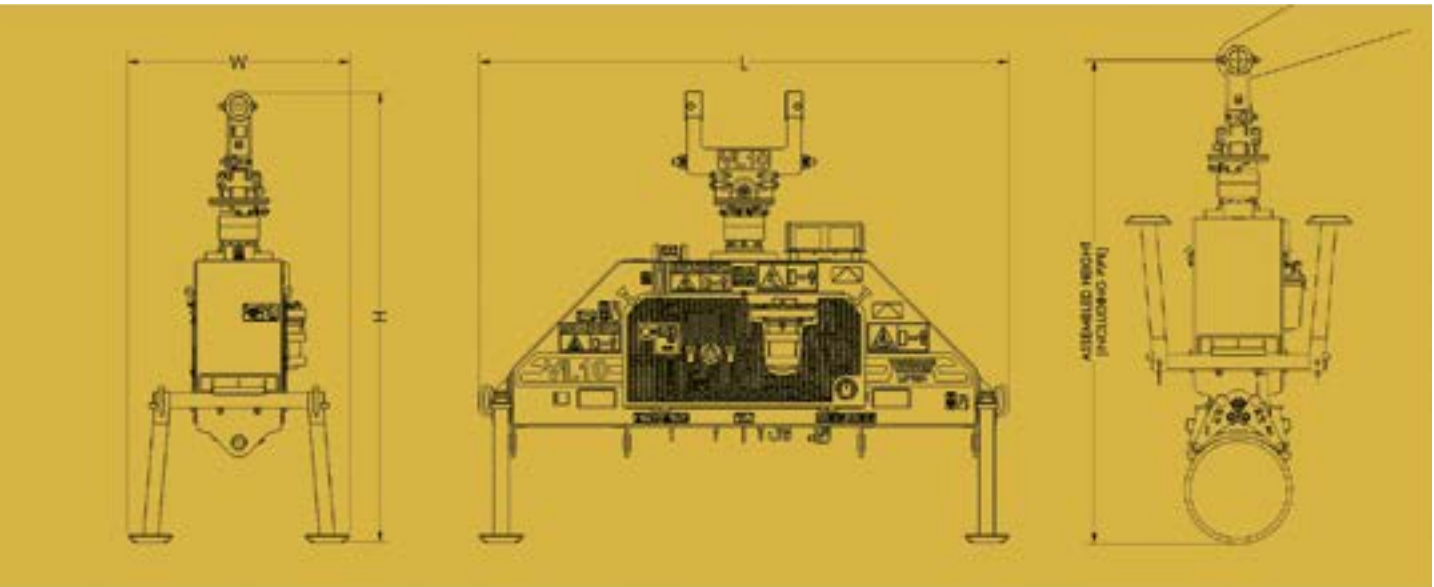
SUPPORTING EQUIPMENT

VACUUM LIFTERS



Design Features

- Built to the highest safety standards: meets or exceeds ASME B30.20 and ASME BTH-1 specifications. Designed to Design Category “B” and Service Class “2” with substantially higher number of cycles: between 100,000 and 500,000 for greatly improved safety and reliability over majority of similar units, which are typically Service Class “O” designed for 0 to 20,000 cycles.
- Extensive Vacuum Lifter and Pad Attachment testing, exceeding US required standards ensures safe load holding capability.
- Large, intuitive Operators Panel with complete lockout function for safe storage and prevents unauthorized start up during maintenance.
- Integrated, foldable tank stand legs allow stowing the unit with pads attached, without the need of carrying an additional large and heavy support frame. Simple operation requires pulling out pins and flipping legs up out of the way.
- Integrated foldable pad stand legs and forklift sockets allow for easy storage and moving pad attachments without destroying the seal. Pads are stored seal down to extend seal life due to minimizing UV exposure.
- Eco oil drain hoses for all components, and diesel fuel tank drain speed up maintenance and keep machine and environment clean.



VACUUM LIFTERS			
MODEL	VL10	VL12	VL16
Lifting Capacity	10 tonnes 22,000 lb	12 tonnes 26,500 lb	16 tonnes 32,275 lb
Working Dimensions (L/W/H)	112/47/94 inches 2.8/1.1/2.3 m	112/47/91 inches 2.8/1.1/2.3 m	112/47/92 inches 2.8/1.1/2.3 m
Operating Weight	1365 kg 3010 lb	1375 kg 3025 lb	1395 kg 3070 lb



VACUUM LIFTERS

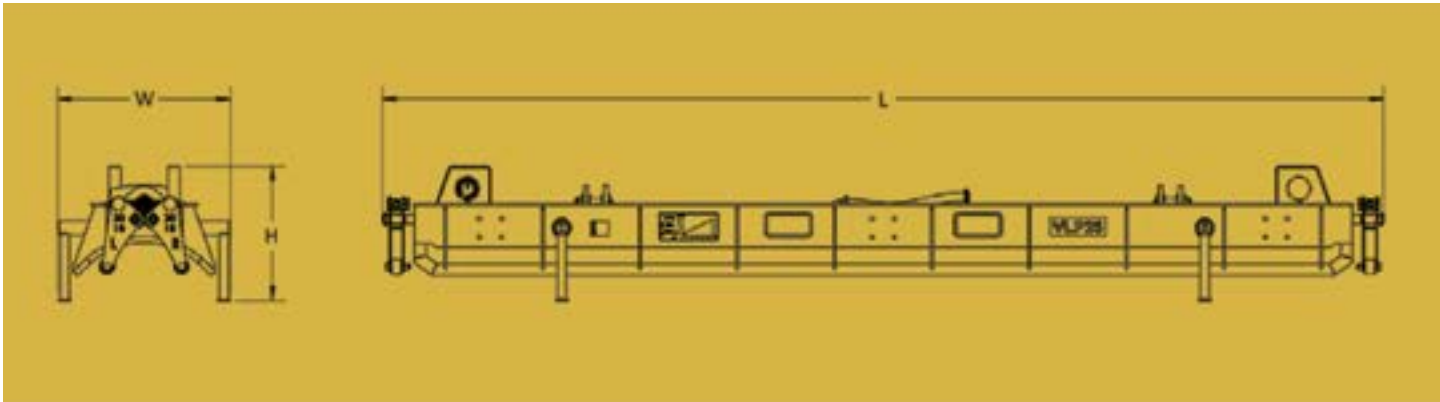


LIFTING PADS VLP4 - VLP20



VACUUM LIFTERS VLP4 - VLP20						
MODEL	DIMENSIONS (L/W/H) 2 PADS REQUIRED		TOTAL OPERATING WEIGHT		ASSEMBLED HEIGHT (INCLUDING PIPE)	
	in	m	lb	kg	in	m
VLP4	79.4 / 16.5 / 16.4	2.02 / 0.42 / 0.42	550	250	85	2.17
VLP6	79.4 / 16.5 / 16.4	2.02 / 0.42 / 0.42	550	250	87	2.20
VLP8	79.4 / 16.5 / 16.4	2.02 / 0.42 / 0.42	570	258	89	2.25
VLP10	79.4 / 16.5 / 16.4	2.02 / 0.42 / 0.42	600	272	91	2.30
VLP12	79.9 / 18.6 / 17.3	2.03 / 0.47 / 0.44	690	312	92	2.33
VLP14	79.9 / 18.6 / 17.3	2.03 / 0.47 / 0.44	710	322	93	2.37
VLP16	85.9 / 18.6 / 17.2	2.18 / 0.47 / 0.44	750	340	95	2.42
VLP18	85.4 / 23.3 / 18.7	2.17 / 0.59 / 0.47	860	390	97	2.46
VLP20	85.4 / 23.3 / 18.6	2.17 / 0.59 / 0.47	870	394	99	2.51

LIFTING PADS VLP22 - VLP48



VACUUM LIFTERS VLP22 - VLP48						
MODEL	DIMENSIONS (L/W/H) 1 PAD REQUIRED		TOTAL OPERATING WEIGHT		ASSEMBLED HEIGHT (INCLUDING PIPE)	
	in	m	lb	kg	in	m
VLP22	169.8 / 29.3 / 22.5	4.31 / 0.74 / 0.57	1085	492	99	2.52
VLP24	169.8 / 29.3 / 22.5	4.31 / 0.74 / 0.57	1135	525	101	2.58
VLP26	169.8 / 29.3 / 22.4	4.31 / 0.74 / 0.57	1160	526	103	2.63
VLP28	169.8 / 35.5 / 24.8	4.31 / 0.90 / 0.63	1215	551	105	2.68
VLP30	169.8 / 35.5 / 24.8	4.31 / 0.90 / 0.63	1260	572	107	2.73
VLP32	181.5 / 35.5 / 24.6	4.31 / 0.90 / 0.63	1480	671	109	2.78
VLP34	181.5 / 35.5 / 24.5	4.61 / 0.90 / 0.62	1490	676	111	2.83
VLP36	181.5 / 35.5 / 24.4	4.61 / 0.90 / 0.62	1500	680	113	2.88
VLP42	228.5 / 45.0 / 25.3	5.80 / 1.14 / 0.64	2100	950	119	3.03
VLP48	228.5 / 45.0 / 24.9	5.80 / 1.14 / 0.63	2230	1012	125	3.18



Disclaimer:
Technical information provided for this equipment regarding performance, specifications, dimension and weights can vary depending on final configuration of the equipment. Please contact DMI International for actual specifications at time of shipment.

DMI International does not accept responsibility for errors regarding the technical information, nor the consequences of any errors, nor the consequences to changes in the specifications contained herein. DMI International reserves the right to modify the equipment performance and specifications without notice.

HYDRAULIC PIPE FACING MACHINE

Design Features

- Available in sizes 8"- 60"
- This unit requires a hydraulic power source
- Transition tapers or counterbores for joining pipes of different wall thickness
- Mitered bevels up to 2-1/2" where mitered pipe is required
- Provides a bevel for pipeline tie-ins, on and offshore, that will maximize quality and minimize repairs of field welding. A combination of hydraulic and mechanical components produce a bevel within our + or - .016" (0.406MM) tolerance
- Pipe end prep station for double jointing yards
- Radial arm tool holder or dovetail type tool holder



FACING MACHINE										
MODEL	LENGTH		WIDTH		HEIGHT		CUBE		WEIGHT	
	in	mm	in	mm	in	mm	ft	m	lb	kg
8 - 14	65	1651	34	863	37	939	47	1.34	1300	590
16 - 22	81	2057	40	1016	43	1092	81	2.28	1850	839
24 - 32	100	2540	41	1041	52	1320	123	3.49	3200	1451
34 - 38	103	2616	44	1117	58	1473	152	4.31	3800	1723
40 - 48	129	3276	54	1371	77	1955	310	8.79	6500	2948
50 - 60	140	3556	68	1727	87	2209	479	13.57	8800	3991

POWER UNITS

Design Features

- Available in diesel or electric drive, each unit is self contained and includes everything necessary to power the Pipe Facing Machine
- Diesel Units come equipped with an electric start, water cooled, diesel engine
- Electric Units contain a heavy-duty industrial motor, disconnect switch with thermal protection, and an On/Off switch for operation. Electric Units are available in a variety of voltages and may be ordered as 50 Hz or 60 Hz
- All units come equipped with a dual-action hydraulic oil pump and a heavy-duty oil filter



SIDE BOOM PIPE LAYERS



Design Features

- Folding boom for ease of transportation
- Controls are easy to operate and require minimal operator training
- Hydraulic boom stop automatically prevents system over travel and damage to boom
- Sideboom features quick release hinge pins for easy boom removal and maintenance
- Hydraulically operated, four-bar linkage counterweight system for maximum stability and lifting capability
- Optional 2-speed load winch
- Optional Boom Lengths
- Various models available for sale or lease



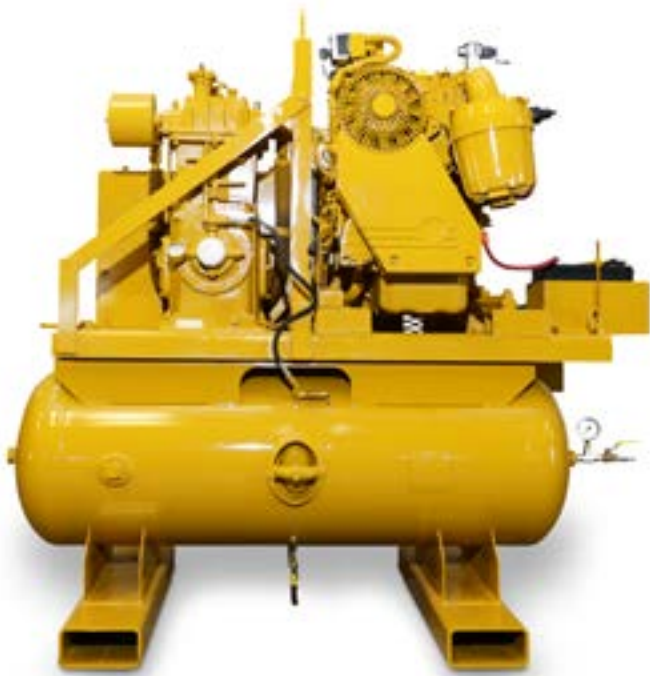
AIR COMPRESSORS

Design Features

- Designed to complement DMI pneumatic equipment - foot-mounted, complete, ready to operate
- Working range is up to 225 psi (15.3 atm)
- Minimum range compressed air supply is 180-200 psi (12.2-13.6 atm)
- 25CFM - Model #325
- 40CFM - Model #340 73"x 36"x 69" (1880 mm x 940 mm x 1803 mm) 2,075 lbs. (941 kg) (30 HP Duetz, 2 Cylinder motor)
- 90CFM - Model #390 76"x 48"x 78" (1778 mm x 1219 mm x 1981 mm) 2,650 lbs. (1202 kg) (46 HP Duetz, 3 Cylinder motor)
- Specified power units include:
 - HTD - Diesel engine with electric start
 - HTE - Electric motor, at customer's required voltage

Available Options

- Air tank certified to special (non-U.S.) standards
- Centerlift hook
- Pipe bending machine mounting bracket
- Roll-over cage



MANUAL INTERNAL LINEUP CLAMP



- Toggle action puts maximum power on pipe
- "Gap" is unobstructed for fuller stringer bead
- Heavy duty jack box puts more power on the pipe with less operator effort
- Each clamp machined for specific wall thickness and pipe O.D.
- Available with copper back-up ring
- Standard 6" to 60"

HYDRAULIC INTERNAL LINEUP CLAMP



- Easy to operate
- Requires no outside power unit
- Precision manufactured, field proven
- Each clamp machined for specific wall thickness and pipe O.D.
- Heavy duty all steel construction
- Standard 16" to 60"
- Available through 100"

MANUAL, RATCHET & HYDRAULIC EXTERNAL LINEUP CLAMPS STANDARD & NO-TACK

Manual

- Precision Acme threads ensure strength and ease of operation.
- Standard 1" ratchet handle fits all sizes
- Available in sizes 2" through 60"
- Mechanism is enclosed to eliminate dirt and mud
- Will not back off while weld is being made
- No-Tack type has arched cross-beams to permit continuous welding without removing the clamp
- Heavy duty all steel construction

Ratchet

- Heavy duty all steel construction.
- Standard 1" ratchet handle fits all sizes
- Precision Acme threads ensure strength and ease of operation
- Clamp sizes 2" through 60"
- Mechanism is enclosed to eliminate dirt and mud
- Will not back off while weld is being made
- No-Tack type has arched cross-beams to permit continuous welding without removing the clamp

Hydraulic

- Accurately aligns in minutes
- Hinged to open wide for easy mounting, use, or removal
- Circle secured by single master pin
- Bridging allows full 360° welding without removing clamp
- Available in sizes from 16" to 60"
- Heavy duty all steel construction
- Precision manufactured, field proven



GPB HEAD IRON

- Alloy steel for greater strength with less weight
- Reinforced lifting bail and end iron hooks for increased durability
- Painted with stainless steel data plate
- Lowering-in belt not included
- Belts used around the world in sizes for 2 hook to 11 hook



GPM LOWERING-IN BELT

- Heavy duty nylon webbing for durability and strength
- Alloy steel end irons for greater strength with less weight
- Web coated with heavy duty vinyl coating
- Head iron not included as pictured
- Lowering in belt and head iron sold separately
- Belts used around the world, in all types of climates, in sizes up to 60" diameter pipe
- Custom belts available for additional pipe diameters



GPC BLP LINED STEEL CHOKER BELT

- Accurately aligns in minutes
- Hinged to open wide for easy mounting, use, or removal
- Circle secured by single master pin
- Bridging allows full 360 degrees welding without removing clamp
- Available in sizes from 16" to 60"
- Heavy duty all steel construction
- precision manufactured, field proven



STAINLESS BEVELING BANDS

- Made from durable stainless steel for long life
- Ease of operation and removal
- Sizes from 6" to 60" in 2" intervals
- Adaptable to any beveling requirement
- Smoothly, accurately cuts and bevels
- Minimum clearance needed in bell holes
- Out of round pipe attachments unnecessary
- Mounts easily anywhere on the pipe



BAND-TYPE CRAWLER

- One man can set up and cut pipes as large as 48"
- Ease of setup when cutting horizontal or vertical pipes due to lightweight design
- Quick installation latching mechanism
- Fits all band sizes
- 60% faster than hand cutting and grinding
- Not Included:*
- Machine cutting torch, torch angle head adapter





DMI WORKMANSHIP



DRIVEN

**DMI International**

HEADQUARTERS

15615 East Pine Street
Tulsa, Oklahoma, USA 74116
Phone: 918.438.2213
Fax: 918.438.2061
www.dmiinternational.com

DMI International

CANADA

P.O. Box 3366
Spruce Grove, Alberta T7X 3A7
Phone: 780.962.6559

DMI International

LATIN AMERICA

Cartagena, Colombia
Phone: 57.318.606.8051
Cell: 918.639.1012

DMI International

MIDDLE EAST

Cell: 918-370-7588
Cell: 918-671-0913

DMI International

U.S. FIELD OFFICES

Center, TX Office
2055 Loop 500 East
Center, Texas 75935
Phone: 936.591.8006

Alice, TX Office
572 FM 1554
Alice, Texas 78332
Phone: 361.661.0685

Conroe, TX Office
611 Aurora Business Park Drive
Conroe, Texas 77301
Phone: 936.441.4014

Midland, TX Office
6400 S. County Rd. 1273
Midland, Texas 79706
Phone: 432.701.6000

Pennsylvania Office
1582 Woodward Ave
Lock Haven, PA 17745
Phone: 570.726.8432

sales@dmiiinternational.com

MADE IN AMERICA

© Copyright DMI International, LLC 11-29-2021

Doc 4009850C

